

Compensated High Inductance Choke, 1-phase



**Description**

- Current compensated choke
- 1-phase choke
- Flexible wire
- Flange for mounting onto printed circuit board
- Fully potted resin

**Standards**

- EN 60938
- IEC 60950
- EN 55011/55014
- VDE 0871/0875

**Applications**

- Placed in front of frequency converter
- Stepper motor drives
- UPS-systems
- Inverter

**References**

**Weblinks**

[pdf](#), [html](#), [General Product Information](#), [Approvals](#), [RoHS](#), [CHINA-RoHS](#), [e-shop](#), [SCHURTER-Stock-Check](#), [Distributor-Stock-Check](#)

**Technical Data**

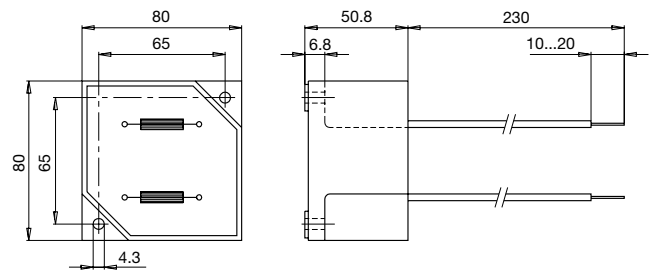
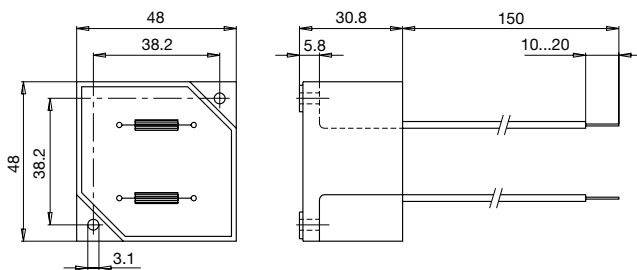
Rated voltage	up to 540 VAC
Rated voltage	up to 760 VDC
Rated Current	4 - 20A @ Ta 40 °C
Rated inductance	14 - 60 mH, Tol. -30% +50%
Power Operating Frequency	50 - 400 Hz
Terminal technic	Flexible wire
Weight	145 - 512 g
Material: Housing	UL 94V-0
Sealing Compound	UL 94V-0

Test Voltage	2.5 kV, 50 Hz, 2 sec, winding to winding
Isolation Voltage	2.5 kV eff., 50 Hz, 2 sec, winding to ambient
Climatic Category	25/100/21 acc. to IEC 60068-1
Allowable Operation Temp.	-25 °C to 100 °C

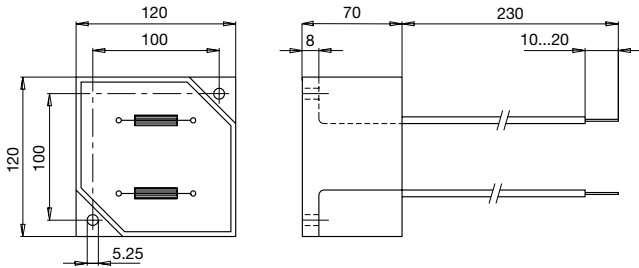
**Dimensions**

Case 29-2W

Case 31-2W

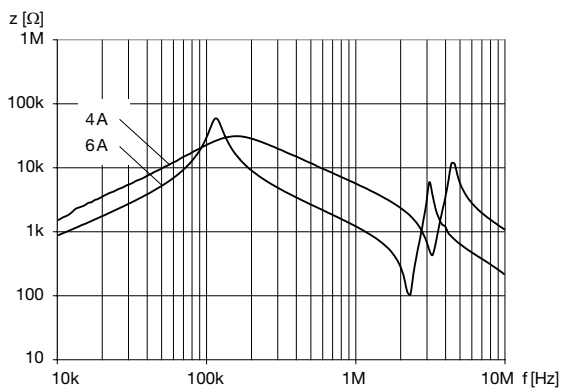


Case 33-2W

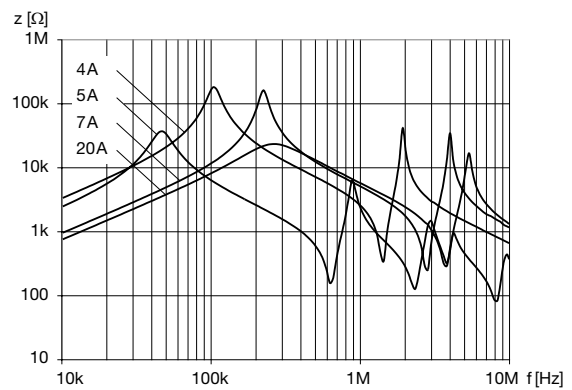


### Impedance curves

DKLP-0229-xxxx



DKLP-023x-xxxx



### Variants

$I_n$ [A]	$L_n$ [mH]	$R_{cu}$ [mΩ]	Tripped Power Dissipation [W]	$f_{RES}$ [MHz]	Copper $\phi$ [mm]	Weight [g]	Housing	Packing unit [pcs.]	Order Number
4	30	96	3	0.2	0.8	145	29-2W	6	DKLP-0229-0430
6	14	46	3.3	0.3	1	145	29-2W	6	DKLP-0229-0614
4	60	250	8	0.1	0.71	477	31-2W	2	DKLP-0231-0460
5	40	126	6.3	0.048	0.9	505	31-2W	2	DKLP-0231-0540
7	20	62	6	0.18	1.12	512	31-2W	2	DKLP-0231-0720
20	12	19	15.2	0.16	1.8	180	33-2W	1	DKLP-0233-2012